



THE SECRETARY OF HEALTH AND HUMAN SERVICES  
WASHINGTON, D.C. 20201

January 5, 2011

The Honorable Harold Rogers  
Chairman  
Committee on Appropriations  
U.S. House of Representatives  
Washington, D.C. 20515

Dear Chairman Rogers:

I am writing to inform you of the Department of Health and Human Services' (HHS) plan to place the office administering the Community Living Assistance Services and Supports (CLASS) Act within the Administration on Aging (AoA).

HHS has been entrusted with the responsibility for implementing many major provisions of the Affordable Care Act of 2010, which the President signed into law on March 23, 2010. In order to efficiently and effectively implement the provisions of Title VIII, the CLASS Act, it is necessary to have a dedicated office that has as its primary focus the implementation and management of this new and innovative program. Placing this office within AoA will produce administrative efficiencies by leveraging AoA's mature budget, contracting, and human resources functions in support of the core functions of this new office.

The Office of CLASS will administer a voluntary, federally administered long-term care financing plan that will be supported by individual premium contributions. CLASS will provide participating adults needing long-term supports a flexible source of funds that can be used to purchase goods and services aimed at helping them remain independent. The CLASS office will establish the national voluntary insurance program, set premiums, set rules for enrollment and eligibility systems, and specify and design the benefit. It will also establish systems for advice and assistance, and support a protection and advocacy network to serve beneficiaries of the program. In addition, the Office of CLASS will convene and support two Federal Advisory Committees, the Personal Care Attendants Workforce Advisory Panel and the CLASS Independence Advisory Council.


Kathy Greenlee, Assistant Secretary for Aging, is currently providing interim leadership to the staff working on CLASS. She will continue to provide leadership to this new AoA office, as she does for the other operating units within AoA. This new office will work closely with the Office on Disability, the Administration for Children and Families, the Centers for Medicare & Medicaid Services, and other components within HHS to ensure coordination with existing programs.

For your information, I have enclosed the current AoA organizational chart and a chart that reflects the planned addition of this office.

The Honorable Harold Rogers  
January 5, 2011  
Page 2

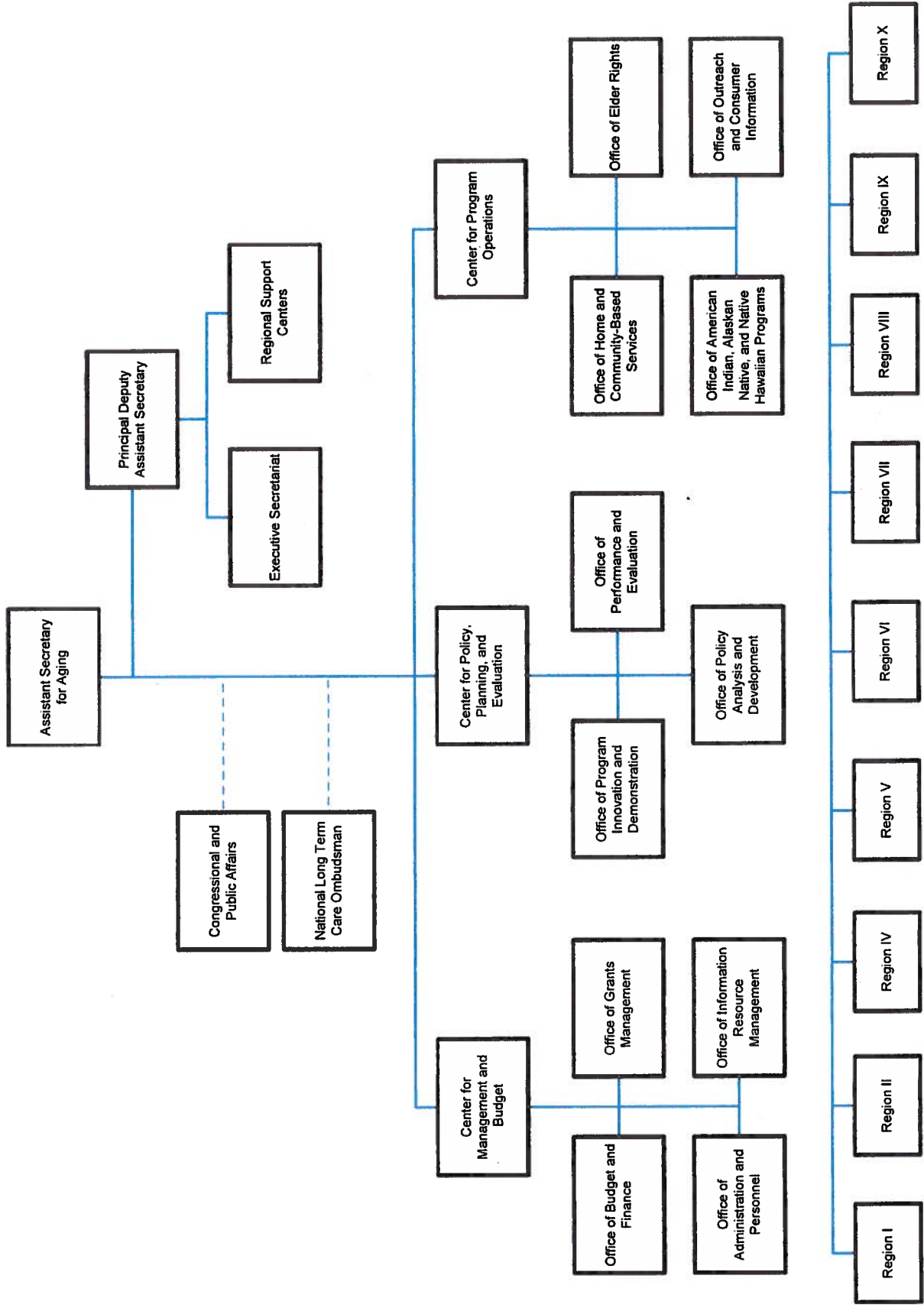
The new CLASS program will play an important role in helping Americans to take steps to protect their independence if they experience disability in the future.

I appreciate your continued interest in and support of the Department's programs, and I would be happy to answer any questions you or your staff may have.

Sincerely,  
  
Kathleen Sebelius

Enclosures (2)

### Administration on Aging Organizational Chart



# Administration on Aging Organizational Chart

