

**UNITED STATES COURT OF APPEALS
FOR THE SIXTH CIRCUIT**

Kelly L. Stephens
Clerk

100 EAST FIFTH STREET, ROOM 540
POTTER STEWART U.S. COURTHOUSE
CINCINNATI, OHIO 45202-3988

Tel. (513) 564-7000
www.ca6.uscourts.gov

Filed: January 09, 2026

Mr. Edmund Charles Baird
Ms. Louise McGauley Betts
Mr. Joseph Junior Quick
U.S. Department of Labor
Office of the Solicitor
200 Constitution Avenue, N.W., Suite 4004
Washington, DC 20210

Mr. John X. Cerveny
OSHRC
1120 20th Street, N.W., Suite 980
Washington, DC 20036-3419

Mr. William Curphey III
Curphey & Dersch
816 137th Street, N.E.
Bradenton, FL 34212

Mr. J. Micah Dickie
Fisher & Phillips, 1230 Peachtree Street, N.E., Suite 3300
Atlanta, GA 30309

Re: Case No. 25-3037, *Sofidel America v. OSHRC, et al*
Originating Case No. 23-0494

Dear Counsel,

The Court issued the enclosed order today in this case.

Sincerely yours,

s/Kelly Stephens
Appeal Case Manager: Virginia
Direct Dial No. 513-564-7062

Enclosure

UNITED STATES COURT OF APPEALS
FOR THE SIXTH CIRCUIT

No. 25-3037

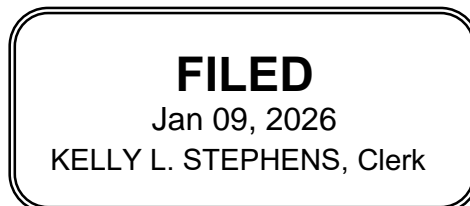
SOFIDEL AMERICA,

Petitioner,

v.

LORI CHAVEZ-DEREMER, Secretary of Labor,

Respondent.



Before: CLAY, KETHLEDGE, and LARSEN, Circuit Judges.

ORDER

On Application for Enforcement of an Order of the
Occupational Safety and Health Review Commission.

UPON CONSIDERATION of the court's contemporaneously filed vacating in part the Commission's order and remanding the case for further proceedings, and

PURSUANT TO FRAP 19—Settlement of a Judgment Enforcing an Agency Order in Part,

IT IS ORDERED that the Commission must file with the clerk and serve on Sofidel America a proposed judgment conforming to the opinion within 14 days. If Sofidel America disagrees with the Commission's proposed judgment, Sofidel America must within 10 days file with the clerk and serve on the Commission a proposed judgment that Sofidel believes conforms to the opinion. The court will settle the judgment and direct entry without further hearing or argument.

IT IS FURTHER ORDERED that the January 9, 2026 judgment filed in this case is WITHDRAWN.

ENTERED BY ORDER OF THE COURT

A handwritten signature in black ink that reads "Kelly L. Stephens".

Kelly L. Stephens, Clerk